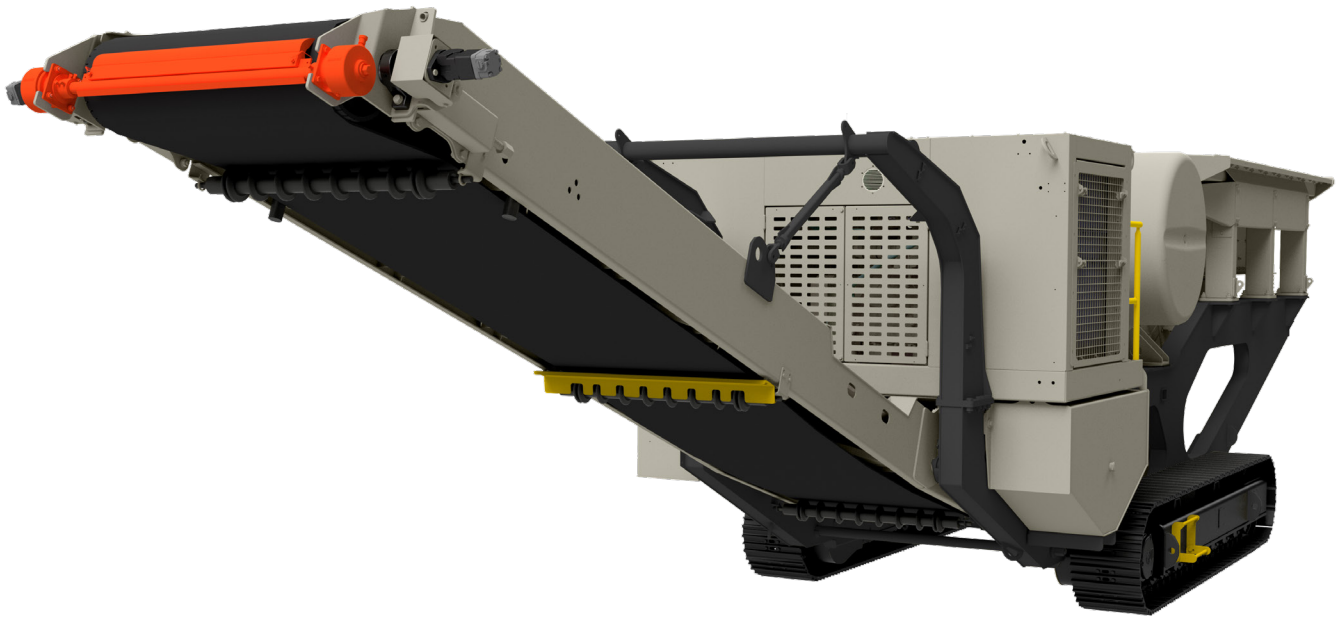


# FT2650

## Mobile Jaw Plant



### Vibrating Grizzly Feeder

- 50" (1270mm) x 18' (5.5m) vibrating pan feeder
- 6.5 cubic yard hopper
- 5' step deck grizzly bars 2.5" nominal spacing
- Three position flop gate

### Jaw Crusher - Vanguard

- Jaw opening - 26" (660mm) Jaw width - 50" (1270mm)
- 260 RPM maximum with 1.25" stroke
- 50" flywheels with AISI 4150 11.25" forged steel shaft
- Three (3) piece AR steel side liners
- Manganese steel jaw dies, cast steel pitman
- Shim-less hydraulic wedge adjust, min CSS 2.5"

### Under Crusher Conveyor

- 48" (1200mm) fixed height with full spill boards
- Impact bed, 360PIW, 4ply, endless belting
- Easily removed for maintenance

### Chassis

- Sculpted frame design
- 19.7" (500mm) tracks with dual drive
- Track length 12' 2" (3.7m)
- Balanced for zero cribbing
- Dust suppression with manifold

### Power and Controls

- CAT C9.3 300hp/224kw Tier 4 Final
- 170gal (643L) fuel tank
- 115gal (435L) oil reservoir
- One 12GPM and one 20GPM hydraulic circuits for magnet, side delivery, or auxiliary
- Radio remote/tether control system
- OPS 7 with push button or touchscreen
- Crusher CSS adjusted safely at control panel
- Real time system monitoring display

## Options

- 18" side delivery with hydraulic fold
- Permanent cross belt magnet, optional steel cladding
- Extended under crusher conveyor with 12' 2" (3.7m) discharge and hydraulic fold (shown above)
- Grizzly fingers with 2" spacing vs. grizzly bars
- Grizzly pre-screener with 3/4" spacing
- Lighting package mounted on engine housing
- Belt scale for under crusher conveyor
- CAT 9 300 HP Tier III vs. Tier IV (international)
- Tramp Iron Relief (TIR) system vs. wedge adjust
- Engine enclosure filter kit

## Physical/Operating Characteristics

Dimension	Standard	Metric
Operating Length	53' 10"	16.4m
Operating Width	10' 9"	3.3m
Travel Length	53' 10"	16.4m
Operating Width w/ Discharge	15' 3"	4.7m
Operating Height	11' 8"	3.5m
Travel Width	10' 11"	3.3m
Travel Height	11' 8"	3.5m
Feed Height	11' 5"	3.5m
Ground Clearance	10"	0.2m
Discharge Height	10' 10"	3.3m
Side Discharge (optional)	5' 2"	1.6m
Total Weight (std. conveyor)	104,000lb	47,173kg
Optional Magnet	4,425lb	2,007kg
Under Crusher Conveyor	6,920lb	3,140kg
Optional Side Delivery	1,300lb	590kg
Feeder & Hopper	15,795lb	7,165kg
Optional Feeder Extensions	3,240lb	1,470kg
Capacity	400 TPH	363 MTPH